



## ROOF SYSTEM

Aluminum 20 pcs rail profile roof system suitable for Custom Clearance.

## ELECTRICAL SYSTEM

Led system Front Lambert and Side Position Lamps suitable for all truck vehicles with 2 x 7 and 1 x 15 socket in accordance with ECE R48 and ADR standards. *Rear view camera and parking sensor (optional)* Image 4

## KING PIN

2" Flange and 8 bolt type king pin detachable from below in ECE R13 norms. 12 tons carrying capacity.

## LANDING GEAR

Double Speed, 50.000 kg carrying capacity, Mechanical Landing Gears.

## CHASSIS

Reis chassis that specially produced for the Reis, formed of I-section high-strength steel material by automatic submerged arc welding method, compliant with ECE R105 standards, dipped galvanized or zinc rich, epoxy primer, paint coated.

## AXLE

3x 9000 kg carrying capacity, Drum or Disc, Reis or equivalent (SAF, BPW, etc.) axle group. *3rd axle steering that fixed in reverse gear position with 30 km and high speed. (optional)*

## LIFTING AXLE

Manual or automatic front axle lifting system that prevents tire wear and provides convenience in turns.

## TOOLBOX

1-unit 700x600x500mm toolbox that made from sheet material. *(Optional)* Image 5

## AIR SUSPENSION

Height adjustment system with lowering and lifting. Parabolic Z springs and shock absorber elements that limit excessive axle movement.

## WATER TANK

60 lt. steel water tank Image 5

## PALLET BOX

26-Units Euro Pallet Capacity (optional) Image 8

## FLOOR SYSTEM

Floor platform that compliant with EN 283 norm, resistant to 7.2-ton forklift load, 30 mm thick imported phenolic resin coated non-slip plywood. Image 6

## BRAKES

Automatic Load Adjustment Valve RSS (Road Stability System) in accordance with ECE R13 Standards Brake system. *RDC (Ramp Distance Control), iLVL (intelligent pneumatic suspension) 4S3M System (optional)*

## COIL CARRIER

Floor platform designed for coil load on the ground for safe transportation of coil loads. Image 7

## LIFT MASTER

It provides convenience during loading by lifting the roof system.

## CURTAIN SYSTEM

Side sliding curtains have a weight of 900 gr/m<sup>2</sup> and a breaking strength of 4300/4000 N/cm and a tearing strength of 500 N. The upper sliding curtains have a weight of 680 gr/m<sup>2</sup> and a breaking strength of 3000 N/cm and a tearing strength of 300 N. Curtains are resistant to heat and cold between -40°C / +70°C. CODE XL.

## MUDGUARDS

Plastic quarter mudguards on edges and anti spray in the middle.

## TIRES AND RIMS

6 pcs 385/65/22,5 Tubeless Tires, steel or aluminum rims in accordance with the 458/2011 Regulation.

## SIDE STRUCTURE

Both sides have 5x4-Units aluminum laths on the side walls. Image 2

## SPANSET HOOK

Leakproof spanset hook holes those opening to the sides of the semi-trailer at 33 cm intervals and suitable for safe load carrying. Image 6

## SIDE WALLS

4-units aluminum side walls on each both sides. (optional) Image 2

## REAR DOOR

Optional aluminum Two rear doors with recessed locks (optional) Image 1

## SIDE PROTECTION

Impact-resistant aluminum side protection in accordance with ECE R73 Standards.

## REAR BUMPER

Rear bumper that dipped galvanized (resistant to abrasion and rust) manufactured and tested in accordance with ECE R58 standards.

## SPARE WHEEL CARRIER

Reducer or optional basket type spare tire carrier. (optional) Image 9

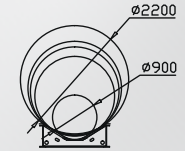
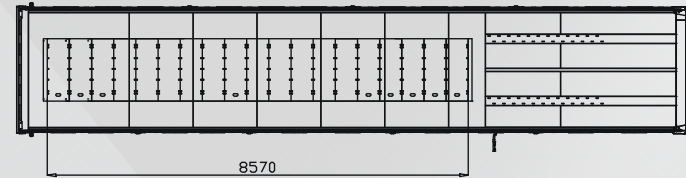
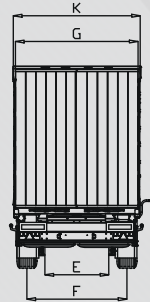
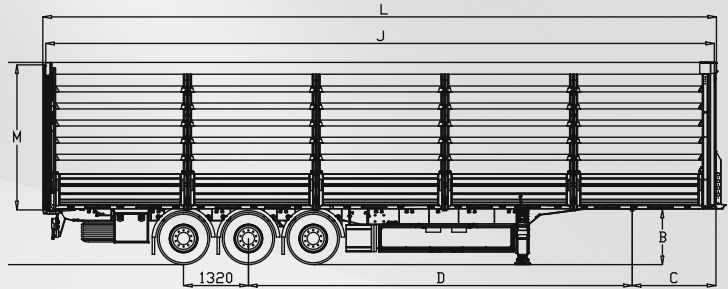


Image 1



Image 2

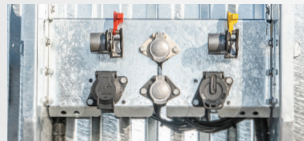


Image 3



Image 4



Image 7



Image 5



Image 8

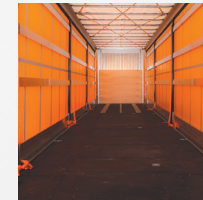


Image 6



Image 9



Image 10

GOOSE-NECK (mm)	RECOMMENDED 5. WHEEL HEIGHT mm	BETWEEN THE FRONT OF THE SEMI-TRAILER AND KING PIN mm	BETWEEN AXLE CENTER AND KING PIN mm	OVERALL HEIGHT (mm)		OVERALL WIDTH (mm)				OVERALL LENGTH (mm)	
				INNER	MAXIMUM	CHASSIS CENTER	TIRE	INNER	OUT	INNER	OUT
				M	H	E	F	G	K	J	L
100	970	1700	7800	2950	4050	1200	1996	2480	2550	13600	13720
100	1050	1700	7800	2870	4050	1300	2056	2480	2550	13600	13720
100	1100	1700	7800	2820	4050	1300	2056	2480	2550	13600	13720
100	1150	1700	7800	2770	4050	1300	2056	2480	2550	13600	13720
100	1200	1700	7800	2720	4050	1300	2056	2480	2550	13600	13720